



BS LEVEL GRADUATE DESTINATIONS

Placement and salary information as voluntarily reported to Engineering Career Services (90% of BS students). % placed equals reported grad school plans or employment within engineering field.

Discipline	BS Grads	% Grad School	% Job Accepted	% Placed
Biomedical Engr.	59	54%	41%	95%
Chemical Engr.	85	20%	71%	91%
Civil & Environmental	105	15%	75%	90%
Computer Engr.	41	5%	92%	97%
Electrical Engr.	57	29%	61%	90%
Engr. Mechanics & Astronautics	33	23%	67%	90%
Geological Engr.	5	80%	20%	100%
Industrial Engr.	70	16%	82%	99%
Materials Science & Engr.	18	12%	88%	100%
Mechanical Engr.	157	11%	84%	96%
Nuclear Engr. & Engr. Physics	24	59%	27%	86%
All Majors Combined	654	22%	72%	94%

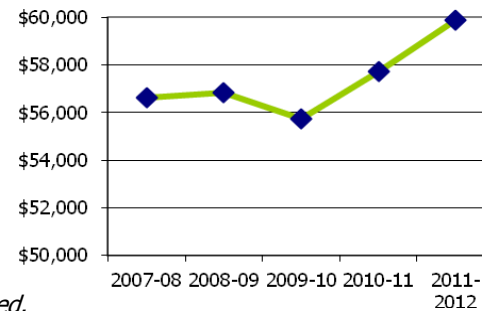
Acceptance Regions

Midwest	79%
South	9%
West	8%
Northeast	3%
International	1%

Top States

Wisconsin	45%
Illinois	15%
Minnesota	10%
Texas	7%
California	3%

Five Year Salary Trend



BS Graduate Salary Information

Includes accepted and declined salaries voluntarily reported.

Discipline	Salary Average	Salary Range	% Increase
Biomedical Engr.	\$55,980	\$34,520-65,000	-2.9%
Chemical Engr.	\$67,362	\$37,440-92,000	9.9%
Civil & Environmental	\$49,647	\$31,200-65,000	3.1%
Computer Engr.	\$70,513	\$40,000-105,000	15.9%
Electrical Engr.	\$59,053	\$46,000-71,000	1%
Engr. Mechanics & Astronautics	\$60,777	\$45,000-70,000	2.7%
Geological Engr.	NA	NA	NA
Industrial Engr.	\$59,771	\$40,000-87,000	1.5%
Materials Science & Engr.	\$62,661	\$54,000-67,000	21.2%
Mechanical Engr.	\$58,469	\$41,600-92,000	1.1%
Nuclear Engr. & Engr. Physics	\$54,581	\$39,000-62,004	-16%
All Majors Combined	\$59,881	\$31,200-105,000	3.7%

BS LEVEL GRADUATE RECRUITMENT

Employers interviewed on campus, attended career fairs, posted jobs, or requested access to candidate profiles/resumes for specific majors. The employer to student ratio notes how many employers recruited for every BS level candidate seeking a professional position.

Discipline	Empls.	Jobs Listed	Students Seeking	% Intl. Students	Emp/Stud Ratio
Biomedical Engr.	176	274	37	11%	4.8:1
Chemical Engr.	330	442	114	0%	2.9:1
Civil & Environmental	360	473	84	12%	4.3:1
Computer Engr.	481	940	33	12%	14.6:1
Electrical Engr.	631	1099	53	15%	12:1
Engr. Mechanics & Astronautics	370	468	29	3%	12.8:1
Engr. Physics	243	343	4	0%	60.8:1
Geological Engr.	166	273	4	0%	41.5:1
Industrial Engr.	433	594	52	15%	8.3:1
Materials Science & Engr.	267	381	19	5%	14:1
Mechanical Engr.	650	974	162	2%	4:1
Nuclear Engr.	165	274	10	0%	16.5:1
All Majors Combined*	1027	2165	640	5%	1.6:1

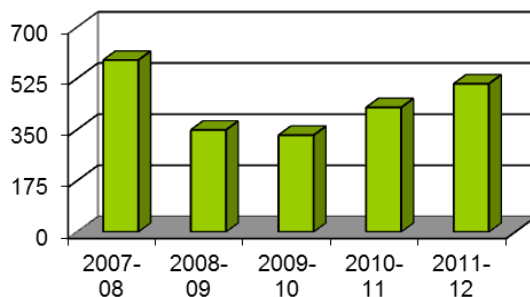
* Includes non-COE majors such as AMEP, BSE, CS and Physics

EMPLOYER RECRUITMENT DETAIL

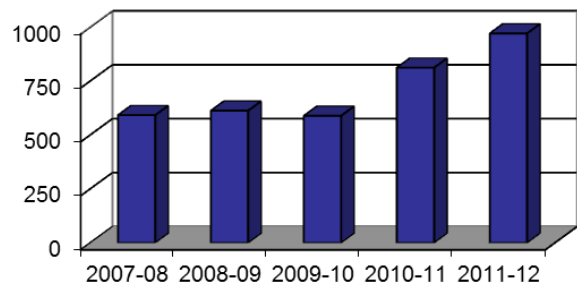
The improvement of the overall economy was reflected in increased recruitment through on-campus visits and job postings. Placement rates and average salary offers improved over 2009-10.

	Professional Full-Time	Co-op/ Intern	Overall/ Combined
Employers on campus for interviews or career fair attendance	308	273	384
On-campus interview schedules	296	279	507
Interviews available to students	4,298	4,037	7,299
Employers using myECS/Requesting access	872	613	971
New employers	247	130	271

Interview Schedules



Employers Using myECS

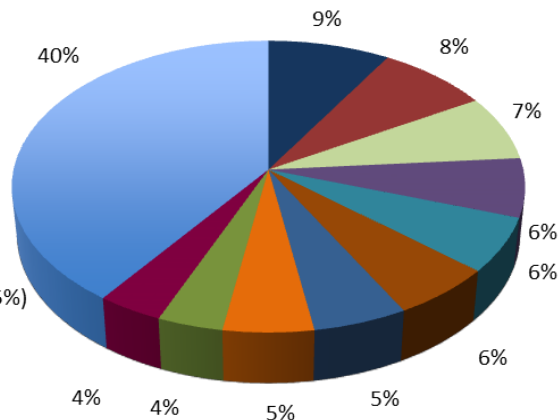


BS LEVEL GRADUATE ACCEPTANCES — TOP AREAS

Employer Breakdown

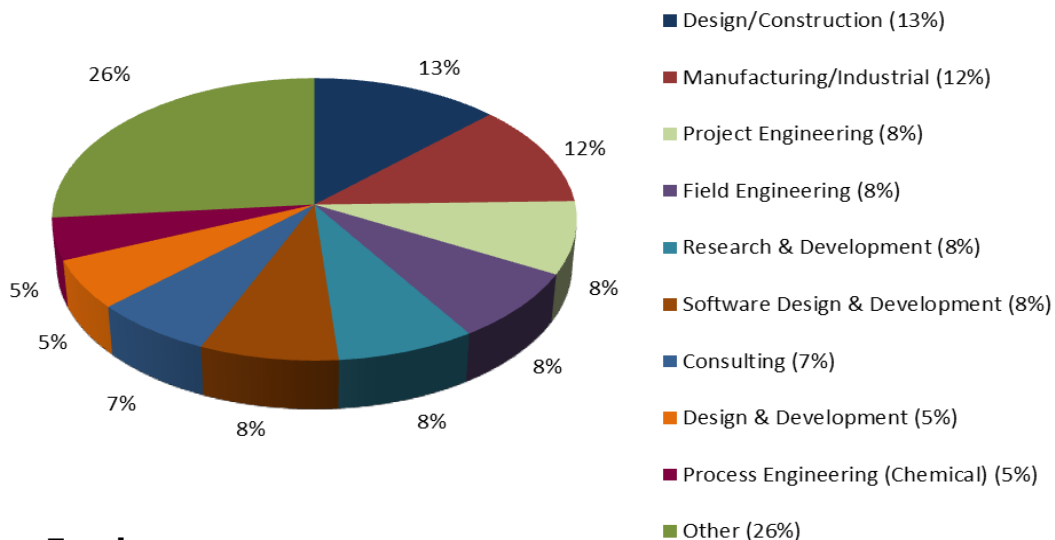
Employers by Industry

- Consulting Services (9%)
- Engineering Services (8%)
- Transportation (7%)
- Building, Developing, & Gen. Contracting (6%)
- Machinery Manufacturing (6%)
- Software Publishers (6%)
- Electrical Equip., Appliance, & Component Mfg. (5%)
- Petroleum & Coal Products (5%)
- Computer & Electronic Products (4%)
- Plastics and Rubber Products (4%)
- Other (40%)



Position Breakdown

Functional Areas of Accepted Positions



Top Employers

By Numbers of BS Acceptances (alphabetical)

Accenture
Amazon.com
Bemis Company, Inc.
Caterpillar, Inc.
Cummins

Epic Systems Corp.
Extreme Engineering Solutions
Ford Motor Company
General Electric
J.P. Cullen and Sons, Inc.

John Deere
Microsoft
Schlumberger
Texas Instruments

COOPERATIVE EDUCATION AND INTERNSHIP PARTICIPATION

Employers interviewed on campus, attended career fairs, posted jobs or requested access to candidate profiles/resumes. Work terms are semesters or summers worked by co-op and intern students.

Discipline	Employers	Jobs Listed	Terms	Mo. Salary
Biomedical Engr.	128	201	40	\$3,413
Chemical Engr.	242	327	116	\$3,439
Civil & Environmental	275	316	147	\$2,477
Computer Engr.	330	493	61	\$3,359
Electrical Engr.	437	584	66	\$3,222
Engr. Mechanics & Astronautics	251	278	28	\$3,392
Engr. Physics	168	200	2	\$2,556
Geological Engr.	119	166	16	\$2,948
Industrial Engr.	299	463	118	\$3,179
Materials Science & Engr.	194	268	21	\$2,955
Mechanical Engr.	448	649	276	\$3,128
Nuclear Engr.	117	166	10	\$3,089
All Majors Combined	708	1282	923	\$3,114

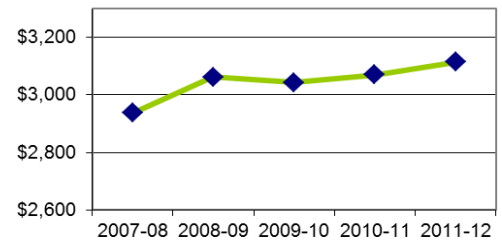
Work Locations

Midwest	86%
West	5%
South	5%
Northeast	2%
International	2%

Top 5 States

Wisconsin	65%
Illinois	8%
Minnesota	7%
California	2%
Texas	2%

Five Year Salary Trend



BS COLLEGE OF ENGINEERING ENROLLMENT – Fall 2012

Underrepresented students include Asian-American, African-American, Hispanic and Native American.

Discipline	Total Students	% Female	% Male	% Under-represented
Biomedical Engr.	196	37%	62%	14%
Chemical Engr.	289	26%	74%	10%
Civil & Environmental	323	22%	78%	8%
Computer Engr.	152	5%	95%	11%
Electrical Engr.	212	11%	89%	15%
Engr. Mechanics & Astronautics	83	8%	92%	4%
Engr. Physics	24	0%	100%	14%
Geological Engr.	64	20%	80%	7%
Industrial Engr.	194	39%	61%	11%
Materials Science & Engr.	56	14%	86%	16%
Mechanical Engr.	549	9%	91%	9%
Nuclear Engr.	78	10%	90%	5%
All Engineering Majors	3,999	20%	80%	13%

Includes First-year EGRs not yet in a Dept.